

WARNING**Definition of warning signs :**

- ⚠ Indication that a risk of electrical origin exists.
- ⚠ Indication that a risk exists for the machine or its operation.
- ⚠ Directions to be used only by qualified professionals.
- ⚡ **Disconnect electrical power before working on the unit !**

1 AREA OF APPLICATION

SANICONDENS® Best is a pump used to lift condensation water from an air conditioning system, a condensation boiler, dehumidifiers or from refrigeration units. The unit has its own neutralisation system that can be used to increase the pH of the acid water from the condensing boiler.

The pump starts automatically and has a high level of performance, safety and reliability as long as all the installation and maintenance instructions mentioned in this manual are strictly followed.

⚠ **All applications other than those described in this manual are prohibited.**

2 DESCRIPTION**2.1 OPERATING PRINCIPLE**

SANICONDENS® Best contains a pump. The tank of the **SANICONDENS® Best** has a built-in a float which controls the operation of the motor. When the condensate enters the tank, the pump starts up.

SANICONDENS® Best has also a built-in secondary float that can trigger an alarm (audible and/or visual) and a condensate neutralization system.

2.2 TECHNICAL DATA

Type	CD 10	Sound level	< 45 dBA
Max. vertical pumping	4.5 m	Average operating temperature	35°C
Maximum flow rate	380 L/h	Maximum allowable temperature	80°C
Min. pH	2.5		S3 15% (1min30 ON/8min30 OFF)
Level ON/OFF	56 mm / 46 mm	Weight of the unit	2 kg
Voltage	115 V	Tank volume	3.5 L
Frequency	50 Hz	Supply cable	1.5 m
Current consumption	0.52 A	Discharge hose	5 m, Øint : 10mm
Power rating	60 W	Alarm cable (2 cores)	1.5 m
Electrical class	I	Max. power for the connected boiler	80 kW
Protection index	IP20	Wall mounting	Yes

2.3 LIST OF PARTS SUPPLIED : see pg. 5.

2.4 DIMENSIONS : see pg. 10.

2.5 PERFORMANCE CURVES : see pg. 10.

2.6 VERTICAL PUMPING/HORIZONTAL PUMPING : see pg. 10.

3 START UP**3.1 INSTALLATION**

- ⚠ Always install the pump :
- horizontally, using a leveling tool,
 - as close as possible to the appliance keeping in mind that the condensate has to drain through gravity into the pump.
- To ensure proper ventilation of the motor, the pump must be free of any obstruction.

The pump can be mounted against a wall using the wall bracket **C** provided :

- Fix the wall bracket **C** horizontally with the plastic anchors **A** and screws **B** supplied (accessory bag). See fig. **1** and **2**.
- Snap the **SANICONDENS® Best** onto the bracket : fig. **3A** and **3B**.
- Check that the **SANICONDENS® Best** is leveled : fig. **3C**.

3.2 HYDRAULIC CONNECTION**Connecting the inlet**

The pump has two inlets that can be used as required :

- The upper inlet is open. If the upper inlet is used (fig. **5**), close the lower side inlet with the supplied gasket **F**, cover **G** and plug **E** (fig. **4.2**).
- To use the lower side inlet (fig. **4.1**), place the plug **E** and Ø32mm gasket **F** on the inlet pipe and screw it onto the inlet.

Drain the condensate water to any of these inlets. If necessary, use a rubber flexible adapter **D**.



UK

Connecting the discharge pipe

The **SANICONDENS® Best** discharge connection must be connected to the flexible vinyl hose **H**.

- Unroll the flexible hose **H**.
 - Insert the hose into the discharge connection that has a built-in non-return valve (see fig. **6**).
 - Position the flexible hose in the upmost vertical position possible to avoid any kinking. It is recommended to make a smooth turn to avoid the hose from kinking.
 - Secure the hose by using the clamp **I** supplied (fig. **6**).
- The hose has an inner diameter of 10 mm and can be connected to a PVC pipe of larger diameter by a plastic reducer connection **J** (fig. **6.1**). Provide a cable tie to secure the connection (fig. **6.2**).

The **SANICONDENS® Best** is fitted with a non-return valve to prevent re-activation.

3.3 CONNECTING THE ALARM



INSTRUCTIONS INTENDED SOLELY FOR QUALIFIED PROFESSIONALS

SANICONDENS® Best is fitted with a detection system that can cut off the power supply to the connected appliance if the water level rises too high. To connect the detection system, connect the other set of cables, black and grey (see "Alarm" label), to the appliance (refer to the instructions of the appliance). See fig. **10**

NOTE: It is possible to connect the detection system to an external alarm (audible or visual, from 1.5V to 230V) by changing the connection of the detection system. **SANICONDENS® Best** is controlled by a dry contact supplied NC (normally closed). To connect the external alarm, this contact must be changed to NO (normally open fig. **11.3**). To do this, open the cover (fig. **11.1**), unplug the grey wire from its location and plug it to the free contact above (fig. **11.2**).

- **ATTENTION** : The maximum current admissible for our detection system is 0.5A.
- To protect the electrical components in the **SANICONDENS® Best**, once the alarm has been triggered, any water continuing to fill the tank comes out through the overflow outlets of the tank.

3.4 MAINS CONNECTION

Connect the power cable **K** to the **SANICONDENS® Best** (fig. **9**) and then to the main power. Comply with local installation requirements.

3.5 USE

Functional test

- **ATTENTION** Before turning on the pump, make sure you remove the protective lock pin from the rear of the device. Fig. **5**.

- Pour water into the tank.
- Check that the pump starts and stops when the water level drops.

- **ATTENTION** - Check that there are no leaks in the connections.

4 STANDARDS

SANICONDENS® Best conforms to the European directive on low voltage.

5 INTERVENTIONS



INSTRUCTIONS INTENDED SOLELY FOR QUALIFIED PROFESSIONALS

- **ATTENTION** Disconnect electrical supply before working on the unit !

5.1 MAINTENANCE (FIG 12)

Check the quality of the neutralizing granules regularly.

Neutralizing granules need to be replaced at least once a year. When replacing the granules, make sure to clean the compartment as well.

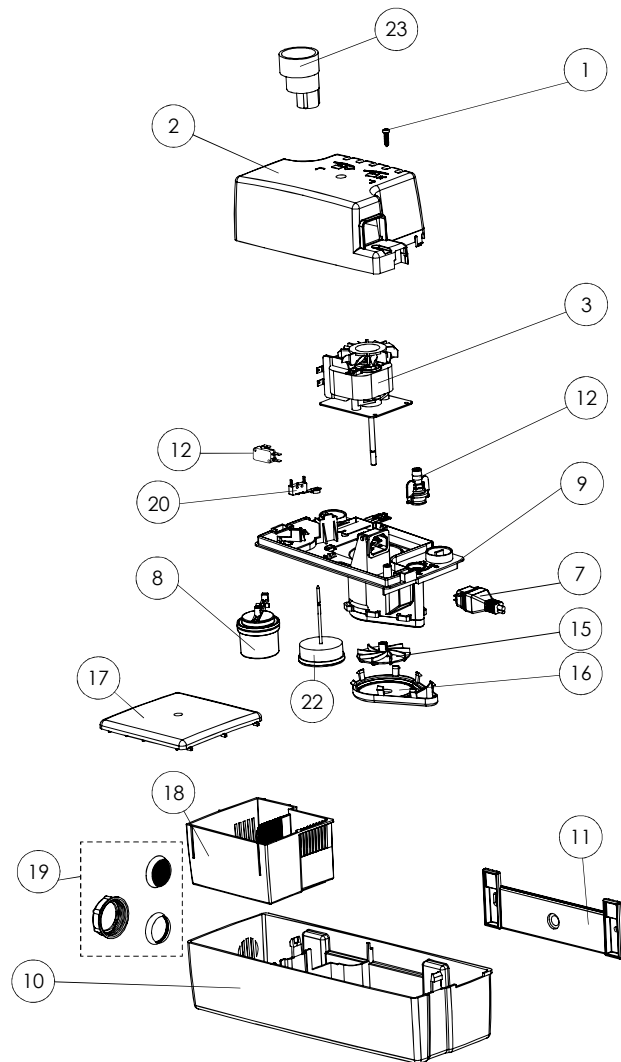
5.2 TROUBLESHOOTING

Fault detected	Probable causes	Action needed
The pump doesn't start	The pump is not connected to the power supply	Plug in the unit
	The lock pin has not been removed	Remove the lock pin
	The unit is not leveled	Check the unit with a leveling tool
	Power outage	Check the main power
	Float blocked	Clean the tank
	Condensates inlet pipe blocked	Clean the inlet pipe
The pump does not lift	Non-return valve blocked	Clean the valve
	Discharge pipe blocked	Clean the discharge pipe

6 GUARANTEE

SANICONDENS® Best is guaranteed for 2 years for parts and labour, subject to correct installation and use of the unit.



**SANICONDENS®Best****220-240 V - 50 Hz - 60 W
IP20 - \pm - S3 15% T=80°C****SERVICE HELPLINES**

	TEL	FAX			
France	01 44 82 25 55	03 44 94 46 19	Benelux	+31 475 487100	+31 475 486515
United Kingdom	08457 650911 (Call from a land line)	020 8842 1671	Sverige	+46 (0)8-404 15 30	
Ireland	1850 23 24 25 (LOW CALL)	+353 46 97 33093	Norge	+46 (0)8-404 15 30	
Australia	+1300 554 779	+61 2 8862 6860	Polska	(+4822) 732 00 33	(+4822) 751 35 16
Deutschland	0800 82 27 82 0	(060 74) 30928-90	Росси́я	(495) 259 29 51	(495) 259 29 51
Italia	0382 6181	+39 0382 618200	Česká Republika	+420 286 712 855	+420 286 712 856
España	+34 93 544 60 76	+34 93 462 18 96	România	+4 0757 634 557	
Portugal	+35 21 911 27 85	+35 21 957 70 00	Türkiye	+90 212 275 30 88	
Suisse Schweiz Svizzera	+41 (0)32 631 04 74	+41 (0)32 631 04 75	中国	+86(0)21 6218 8969	+86(0)21 6218 8970
			Brazil	(11) 3052-2292	

Service information : www.sfa.biz